



PADEL & TENNIS

Standard

Grand-Slam

Warm-up

Padel+

Customized

Aesthetics solutions
to win the set

www.irmarfer.com



WHY IRMARFER?



We have **25 years of experience** in supplying structures for a wide range of uses worldwide. The **recognition** of our products and services is a reality on a **global scale**. Our wide experience in **designing, manufacturing, and delivering** structures, allied with our **constant investment** in **developing** and **innovating new solutions**, places us as the **Iberian leader** in the industry, and one of the worldwide reference players in the structures market.



COST-EFFECTIVE

Less expensive than traditional buildings. They require less material and labor to manufacture, transport, and assemble, making them a cost-effective option for many applications. Possible to achieve **70% of cost savings** when compared to a permanent building.

FLEXIBILITY

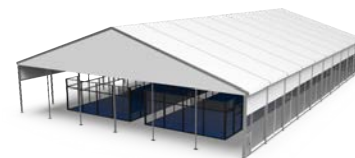
We can design structures of **any size**, and install them in almost any location. We can sell or hire for the time that suits your needs. The structures can be **modified or relocated** to fit your business requirements.

QUICK INSTALLATION

Easy to transport, assemble, and reassemble, a temporary structure can be **installed in a few days**, reducing labor costs and minimizing disruptions to ongoing operations.

RISK MANAGEMENT

In uncertain times, a temporary building is a **lower risk option** than constructing a permanent facility.



SAFETY

Independent of the purpose, our structures follow all the specific requirements regarding **stability** and **safety**. Our structures are made of fire, snow, and windproof materials and are in compliance with EN 13782 for temporary structures and any applicable code or standard for permanent structures.

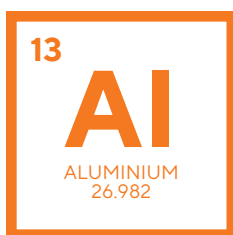


DURABILITY

All of our structures are resistant to environmental influences and can have a **useful life of up to 60 years**. Such characteristics are possible due to the use of **high-quality materials** and state-of-the-art processing methods. They can withstand cyclones, storms, rain, and strong sunlight for long periods.



CE Our products are CE compliant



IRMARFER ALUMINIUM SYSTEM

Why choose aluminium?

1

ADAPTABLE & RELOCATABLE

Aluminium is a highly versatile material, so it can be fabricated into a wide range of shapes and sizes. It's also lightweight so it's easy to transport, assemble, disassemble and relocate the structures. The modular system allows to expand and adapt the structures to all needs.

2

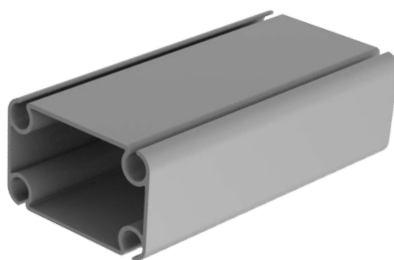
LOW MAINTENANCE

Aluminium requires minimal maintenance, which makes it a cost-effective material. Unlike other metals, like steel, aluminium is naturally corrosion-resistant, so it does not need to be painted or coated to protect it from corrosion.

3

SHORT BUILDING TIME

All products are designed and produced for a simple and fast assembly process. The assembly of all elements is done by clicking and/or bolting methods, reducing the construction time.



4

RECYCLABLE & SUSTAINABLE

Aluminium is 100% recyclable, it can be recycled over and over again without losing its properties. Which makes it an environmentally friendly. It has an extended service life and less waste of resources. Low CO2 footprint.

5

TRANSPORT & LOGISTICS

Due to its low density, malleability and lightweight, aluminium is easy to transport. Doesn't require extensive protective measures, reducing transportation costs, and it also has a lower environmental impact.

ALUMINIUM CONSTRUCTION VS STEEL CONSTRUCTION

Density: The density of aluminium is about one-third that of steel

Maintenance of buildings:

- Aluminium can be 8 times cheaper to maintain than steel, in an aggressive environment
- Aluminium can be 5 times cheaper to maintain than steel, in a normal environment.

IRMARFER ALUMINIUM SYSTEM

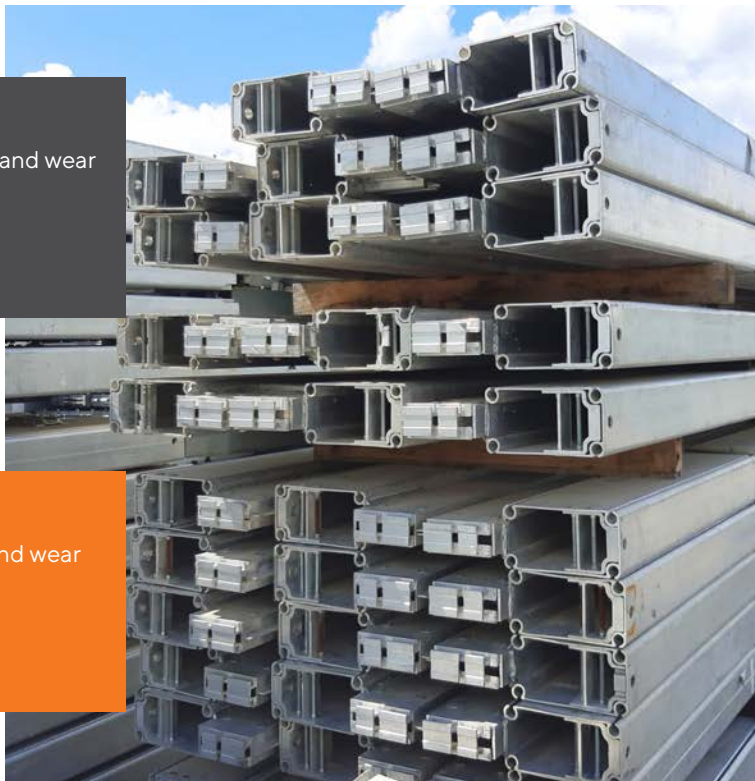
Aluminium Options

NON-ANODIZED ALUMINIUM

- more susceptible to corrosion, scratches, and wear
- uneven appearance
- less expensive
- faster to delivery

ANODIZED ALUMINIUM

- more resistant to corrosion, scratches, and wear
- more consistent appearance
- more durable
- more expensive



LACQUERED ALUMINIUM

Lacquered aluminium means that the aluminium has been coated with a layer of lacquer, a type of clear or colored varnish, that protects the aluminium and enhances its appearance. The lacquer coating provides a **smooth** and **glossy finish** that is **highly resistant** to corrosion, scratches, and wear.

Lacquered aluminium is commonly used in our padel and tennis structures.

E.g.: brown

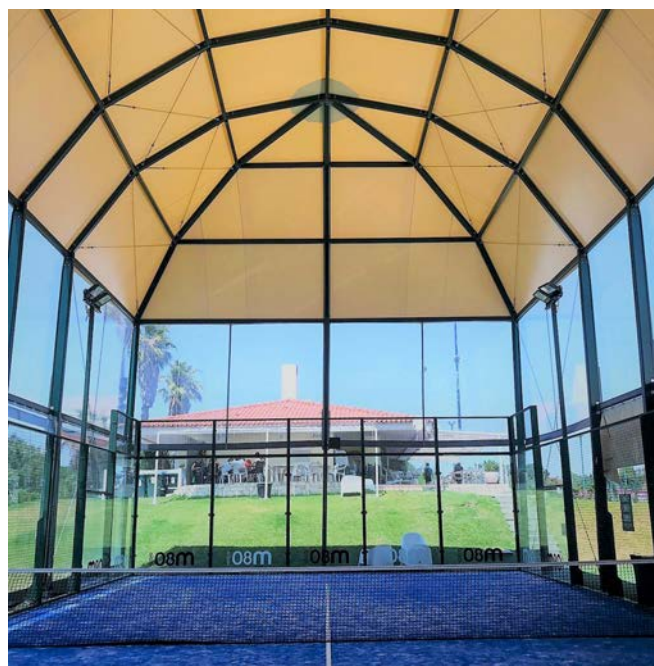
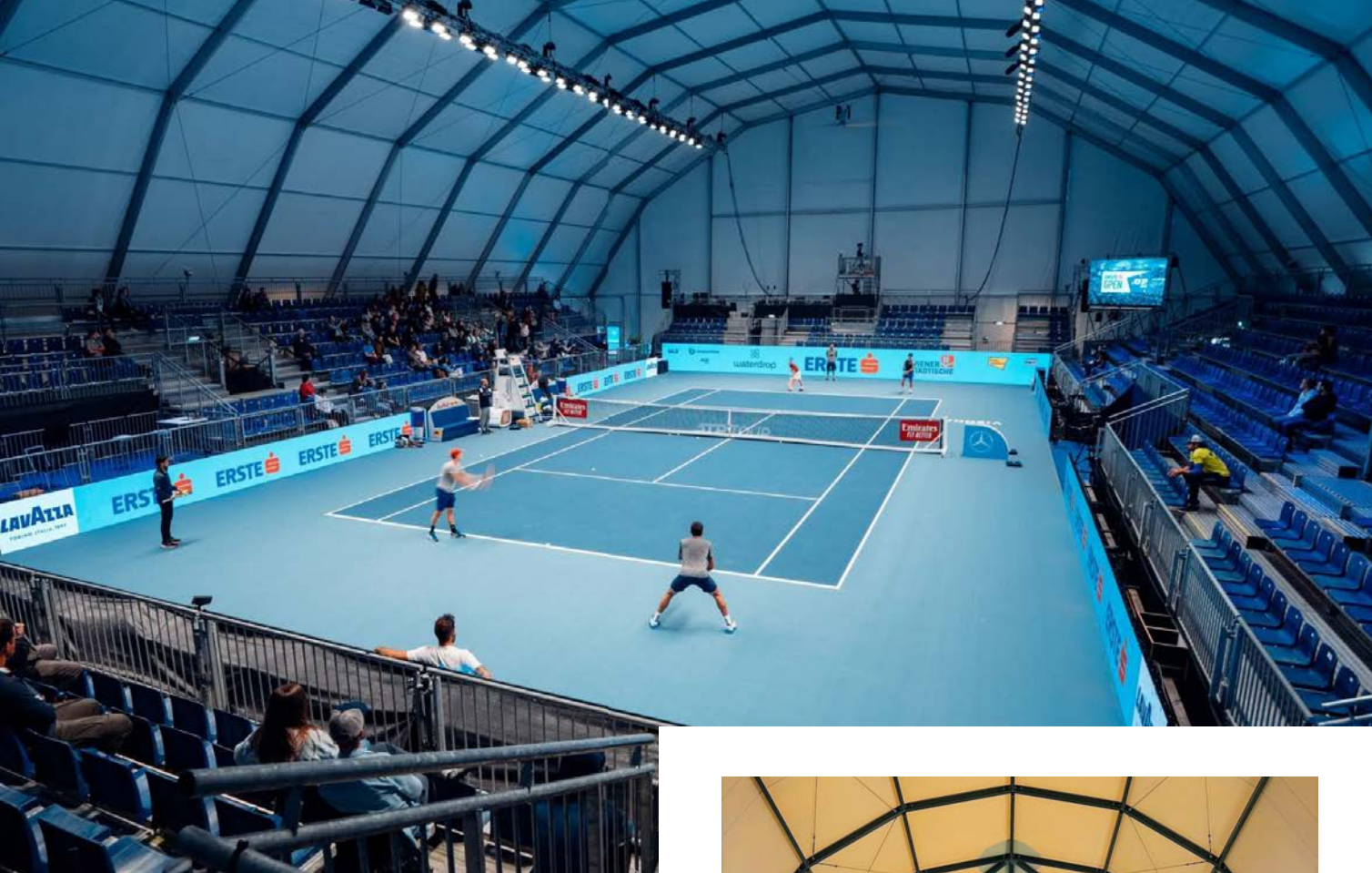


E.g.: green



E.g.: black





PADEL & TENNIS

Structures with an **aesthetic design** and **easy installation**, are ideal solutions to cover individual or multiple paddle and tennis courts.

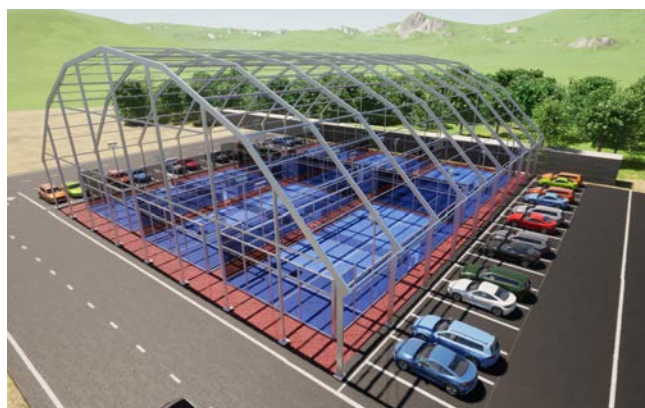
Our models were developed to address rain, wind, and snow constraints (**weather resistant**) and maintain the temperature inside the court, avoiding excessive heating.

Possible to develop **customized** solutions in design, colors, and dimensions. With a wide range of support solutions, including stands, shower rooms, restaurants, video rooms, auditoriums, warm-up spaces, and a gym.

PADEL & TENNIS

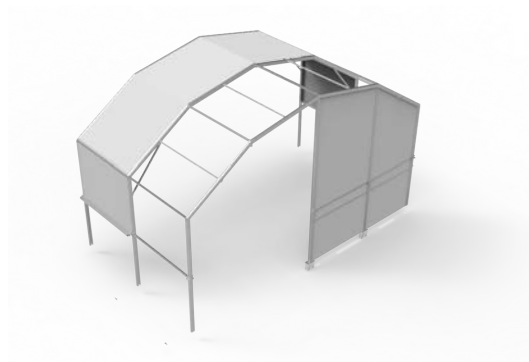
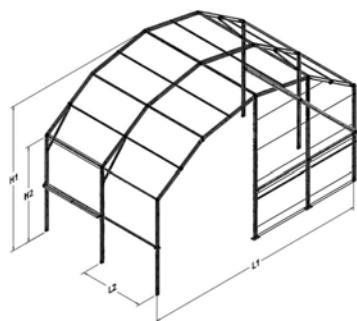
KEY ADVANTAGES

1. **High durability** (10 years guaranteed)
2. **Reduces the blinding** direct sunlight during the day
3. **Rain cover** allows using of the court on rainy days
4. **No condensation** during the night
5. **Prevents** the court from **moistening** from the morning dew
6. **Split Court corridor covers** are available
7. **Customized designs**

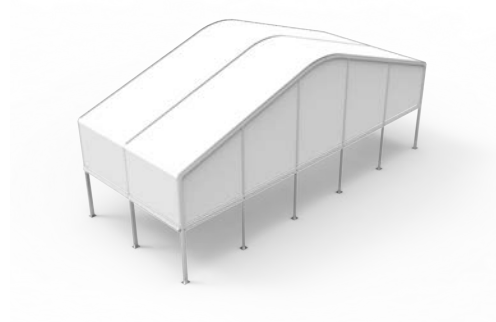
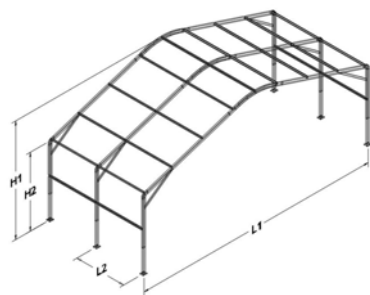


PADEL & TENNIS

STANDARD OPTIONS



| Specifications | Measure | | |
|------------------------------------|---------|-------------------------------------|----------------------|
| Width (customized) | L1 | 11m | 18m |
| Ridge height (customized) | H1 | 10m | 11m |
| Internal ridge height (customized) | H2 | 7,5m | 7,5m |
| Bay distance / grid | L2 | 5m | 5m |
| Total Length | | No limit. Expandable with the grid. | |
| Max. wind speed - Up to | | 100km/h | |
| Snow load | | 0,1kN/m ² | 0,1kN/m ² |



| Specifications | Measure | | |
|------------------------------------|---------|-------------------------------------|----------------------|
| Width (customized) | L1 | 11m | 24m |
| Ridge height (customized) | H1 | 10m | 11m |
| Internal ridge height (customized) | H2 | 7,5m | 7,5m |
| Bay distance / grid | L2 | 5m | 5m |
| Total Length | | No limit. Expandable with the grid. | |
| Max. wind speed - Up to | | 100km/h | |
| Snow load | | 0,1kN/m ² | 0,1kN/m ² |

Note: This is a summary of the main data and measurements of our standard structures. We can provide different options to match your requirements.

