



TV & PRODUCTION STUDIOS

TV Studios

Film Sets

Sound Stages

Live Entertainment

Specially **designed** for
an **ever-changing** industry

www.irmarfer.com



WHY IRMARFER?



We have **25 years of experience** in supplying structures for a wide range of uses worldwide. The **recognition** of our products and services is a reality on a **global scale**. Our wide experience in **designing, manufacturing, and delivering** structures, allied with our **constant investment** in **developing** and **innovating new solutions**, places us as the **Iberian leader** in the industry, and one of the worldwide reference players in the structures market.



COST-EFFECTIVE

Less expensive than traditional buildings. They require less material and labor to manufacture, transport, and assemble, making them a cost-effective option for many applications. Possible to achieve **70% of cost savings** when compared to a permanent building.

FLEXIBILITY

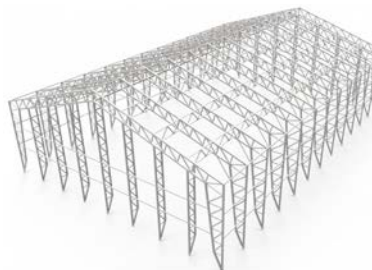
We can design structures of **any size**, and install them in almost any location. We can sell or hire for the time that suits your needs. The structures can be **modified or relocated** to fit your business requirements.

QUICK INSTALLATION

Easy to transport, assemble, and reassemble, a temporary structure can be **installed in a few days**, reducing labor costs and minimizing disruptions to ongoing operations.

RISK MANAGEMENT

In uncertain times, a temporary building is a **lower risk option** than constructing a permanent facility.



SAFETY

Independent of the purpose, our structures follow all the specific requirements regarding **stability** and **safety**. Our structures are made of fire, snow, and windproof materials and are in compliance with EN 13782 for temporary structures and any applicable code or standard for permanent structures.

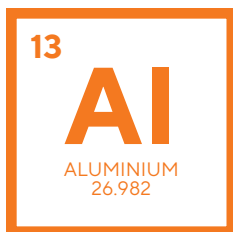


DURABILITY

All of our structures are resistant to environmental influences and can have a **useful life of up to 60 years**. Such characteristics are possible due to the use of **high-quality materials** and state-of-the-art processing methods. They can withstand cyclones, storms, rain, and strong sunlight for long periods.



CE Our products are CE compliant



IRMARFER ALUMINIUM SYSTEM

Why choose aluminium?

1

ADAPTABLE & RELOCATABLE

Aluminium is a highly versatile material, so it can be fabricated into a wide range of shapes and sizes. It's also lightweight so it's easy to transport, assemble, disassemble and relocate the structures. The modular system allows to expand and adapt the structures to all needs.

2

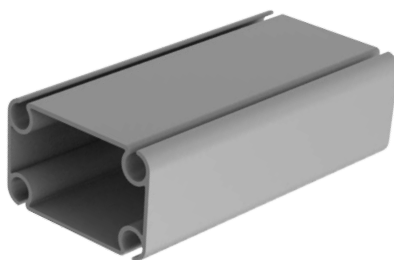
LOW MAINTENANCE

Aluminium requires minimal maintenance, which makes it a cost-effective material. Unlike other metals, like steel, aluminium is naturally corrosion-resistant, so it does not need to be painted or coated to protect it from corrosion.

3

SHORT BUILDING TIME

All products are designed and produced for a simple and fast assembly process. The assembly of all elements is done by clicking and/or bolting methods, reducing the construction time.



4

RECYCLABLE & SUSTAINABLE

Aluminium is 100% recyclable, it can be recycled over and over again without losing its properties. Which makes it an environmentally friendly. It has an extended service life and less waste of resources. Low CO2 footprint.

5

TRANSPORT & LOGISTICS

Due to its low density, malleability and lightweight, aluminium is easy to transport. Doesn't require extensive protective measures, reducing transportation costs, and it also has a lower environmental impact.

ALUMINIUM CONSTRUCTION VS STEEL CONSTRUCTION

Density: The density of aluminium is about one-third that of steel

Maintenance of buildings:

- Aluminium can be 8 times cheaper to maintain than steel, in an aggressive environment
- Aluminium can be 5 times cheaper to maintain than steel, in a normal environment.

IRMARFER ALUMINIUM SYSTEM

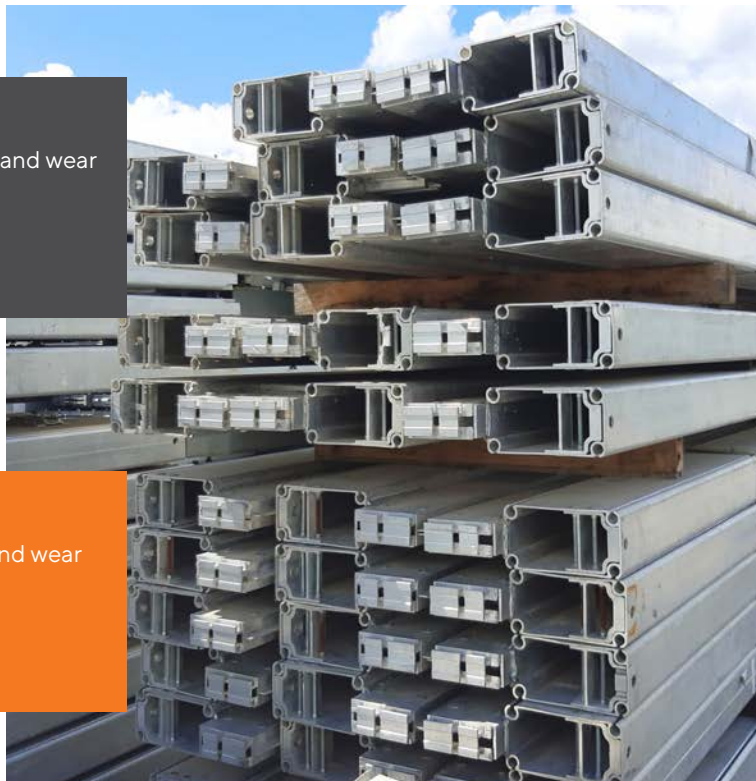
Aluminium Options

NON-ANODIZED ALUMINIUM

- more susceptible to corrosion, scratches, and wear
- uneven appearance
- less expensive
- faster to delivery

ANODIZED ALUMINIUM

- more resistant to corrosion, scratches, and wear
- more consistent appearance
- more durable
- more expensive



LACQUERED ALUMINIUM

Lacquered aluminium means that the aluminium has been coated with a layer of lacquer, a type of clear or colored varnish, that protects the aluminium and enhances its appearance. The lacquer coating provides a **smooth** and **glossy finish** that is **highly resistant** to corrosion, scratches, and wear.

Lacquered aluminium is commonly used in our padel and tennis structures.

E.g.: brown



E.g.: green



E.g.: black



TV STUDIOS & PRODUCTION SETS

Irmarfer studios structures were designed with **flexibility** and **adaptation** in mind. We know a temporary film or TV studio structure requires highly particular conditions and **tight deadlines**. That's why our solutions can be tailored to meet all studios' standards and demands.

Designed to be **cost-effective** and **time efficient**, it can be installed in a short period of time and doesn't have the cost associated with permanent buildings, making them a better solution for an ever-changing industry like television and cinema. At the same time, they can be **adapted and relocated** to other locations, so you can reuse or extend the structure to fit your needs.

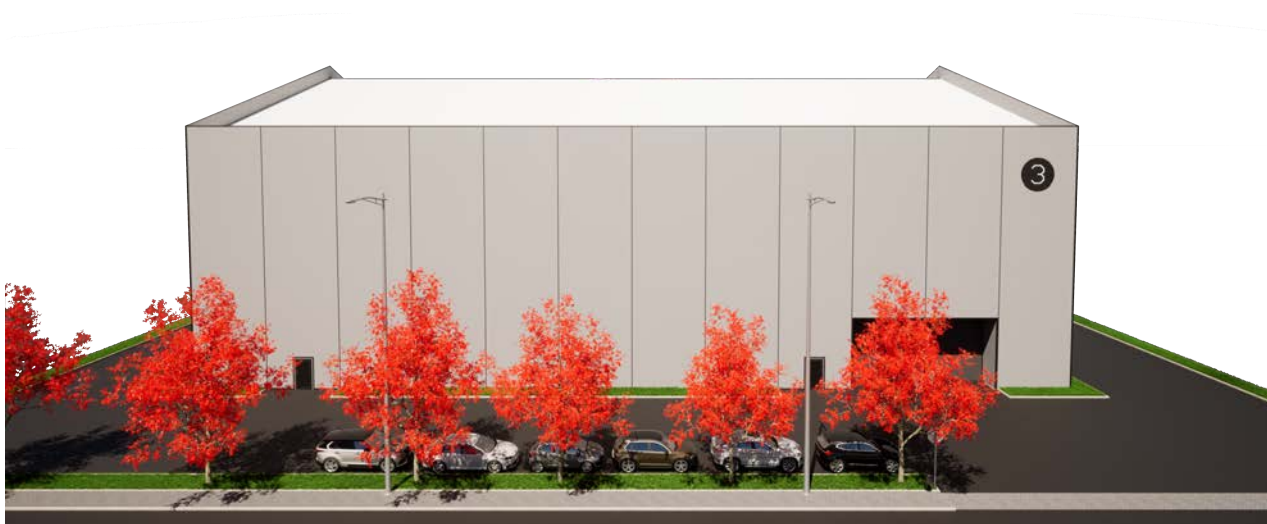
Our solutions have options for sound insulation, height, load bearing, flooring, and access, ensuring they can cover any situation.

UP TO 20M HEIGHT



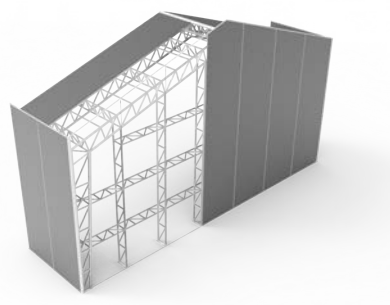
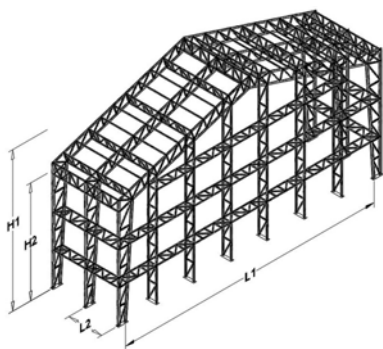
KEY ADVANTAGES:

- Clear span** up to 70m ■
- Flexible **internal height** from 10m to 20m ■
- Huge load capacity** - up to 6 tonnes per frame ■
- Sound insulation** ■
- Eliminates ambient noise ■
- Adaptable and **relocatable** ■
- Scalability** ■
- Quick installation** ■



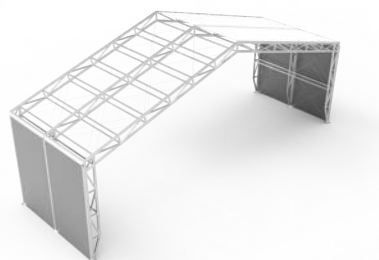
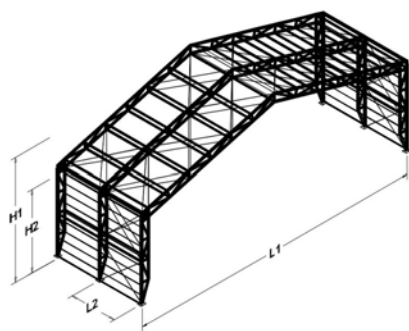
TV STUDIOS & PRODUCTION SETS

A-FRAME FLEXSPAN



Specifications	Measure						
Width	L1	20m	30m	40m	50m	60m	70m
Side height - Up to	H2	10m	10m	10m	10m	10m	10m
Ridge height	H1	12m	13m	15m	17m	19m	21m
Bay distance / grid	L2	5m	5m	5m	5m	5m	5m
Total Length		No limit. Expandable with the grid.					
Rigging Capacity - Up to	Per frame	6 tonnes	6 tonnes	6 tonnes	6 tonnes	6 tonnes	6 tonnes
Max. wind speed - Up to		195km/h					
Snow load		0,1kN/m ²	0,1kN/m ²	0,1kN/m ²	0,1kN/m ²	0,1kN/m ²	0,1kN/m ²

A-FRAME AEROSHELL



Specifications	Measure			
Width	L1	20m	30m	40m
Side height - Up to	H2	9m	9m	9m
Ridge height	H1	12m	13m	15m
Bay distance / grid	L2	5m	5m	5m
Total Length		No limit. Expandable with the grid.		
Rigging Capacity - Up to	Per frame	6 tonnes	6 tonnes	6 tonnes
Max. wind speed - Up to		195km/h		
Snow load		0,1kN/m ²	0,1kN/m ²	0,1kN/m ²

Note: This is a summary of the main data and measurements of our standard structures. We can provide different options to match your requirements.

TV STUDIOS & PRODUCTION SETS

SPECIFICATIONS

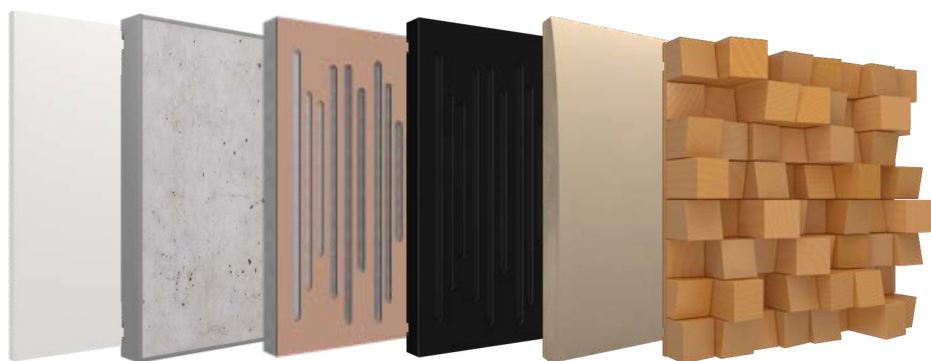
Quick installation	Installation within days (depending the scale of project)
Load capacity	Up to 6 tonnes per frame
Flexible height range	10m to 20m
Adaptability	It can be fully dismantled and relocated
Soundproof absorption coefficient (α)	Up to 0,8
Free-span	Up to 70m
Use	Short or long-term use (few months to few years)
Wind loading	EN 13782 or any applicable code or standard

Extra accessories available: sectional gates, double doors, man doors, windows, LED lighting, HVAC, gutter, inner partitioning, access ramps, etc.

AUDIO QUALITY – ACOUSTIC TREATMENT

Audio quality is a major concern in a TV Studio or set production, especially if live audiences are in the studio. Knowing this, we can deliver a more differentiated offer in **acoustic treatment**, in collaboration with **VICOUSTIC**.

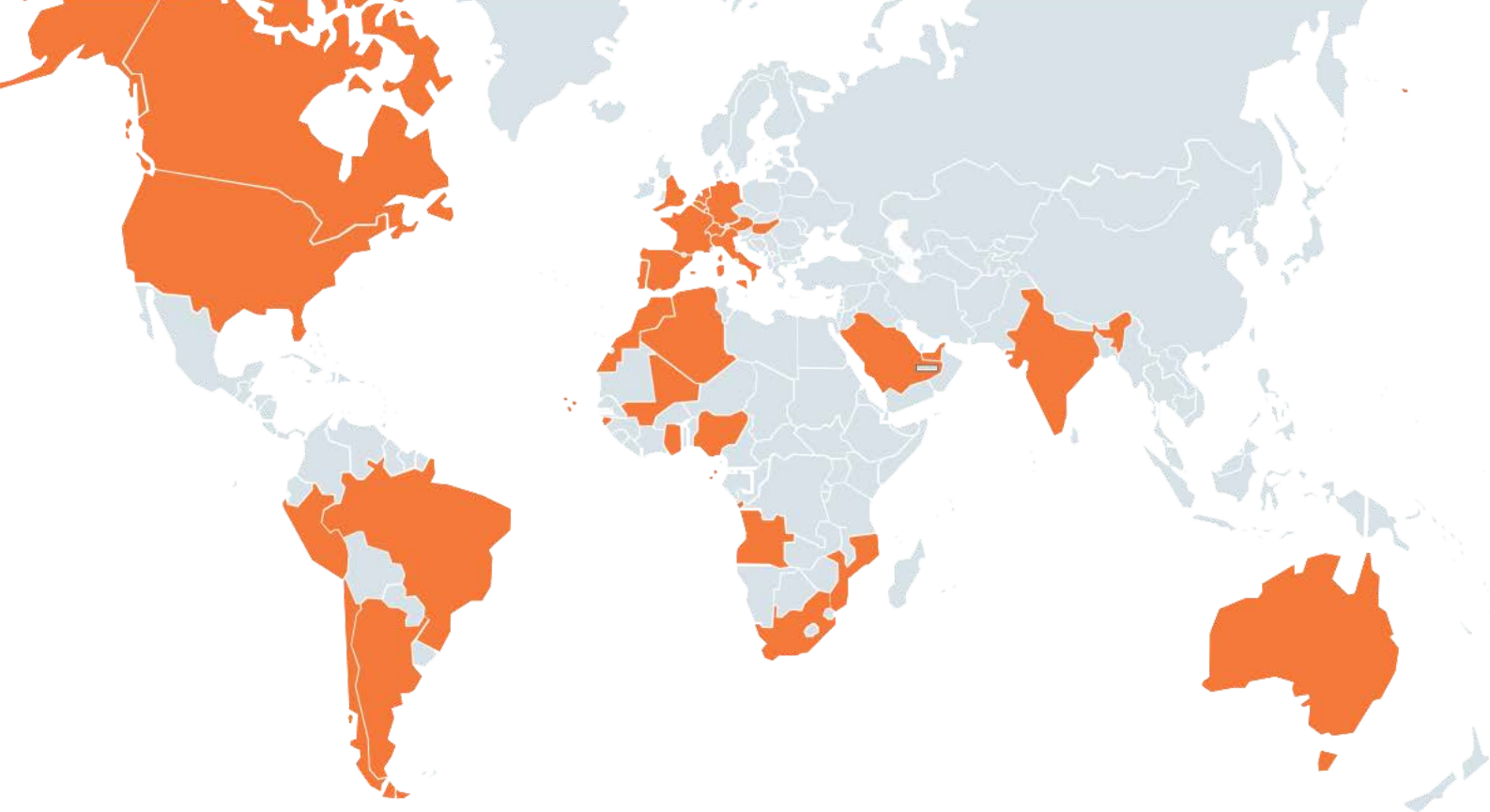
Vicoustic is a world-leading company in sound treatment innovation. They design and manufacture acoustic treatment and **soundproofing** solutions, that are **sustainable** and **eco-friendly**.



VICOUSTIC
INNOVATIVE ACOUSTIC SOLUTIONS

These are some of the panels produced by Vicoustic, but you can customize your solution. You can find more information about the acoustic treatment solutions in the technical product information attached to this document.

Our engineering team can provide you with a customized solution and also help you plan possible relocations or size adaptations.



IRMARFER WORLDWIDE

Algeria
Angola
Argentina
Australia
Austria
Belgium
Brazil
Canada

Cape Verde
Chile
England
France
Germany
Ghana
Guinea-Bissau
Hungary

India
Italy
Luxembourg
Mali
Morocco
Mozambique
Netherlands
Nigeria

Peru
Sao Tome and Principe
Saudi Arabia
South Africa
Spain
Switzerland
United Arab Emirates
United States of America

CONTACTS

Rua do Pólo 6, 118
4590-373 Freamunde
Portugal

☎ (+351) 255 881 786
☎ (+351) 910 696 202
✉ info@irmarfer.com

Facebook /irmarfer
Instagram /irmarfer.official
LinkedIn /irmarfer-structures

www.irmarfer.com

